



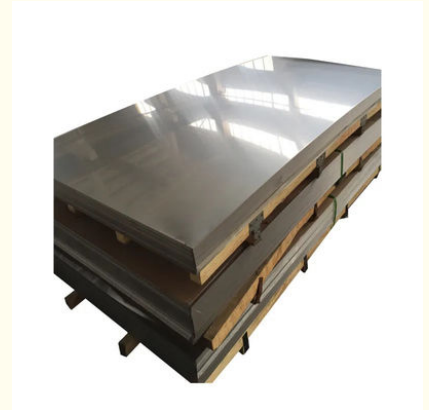
Nickel Alloy Monel 400 K500 Inconel 718 Sheet 600 601 625 Nickel 200 201

Our Product Introduction

for more products please visit us on specialalloysteels.com

Basic Information

- Place of Origin: China
- Brand Name: Qingsen
- Model Number: Monel K-500
- Minimum Order Quantity: 1-2 ton
- Price: negotiable
- Packaging Details: carton box
- Delivery Time: 15-20 days
- Payment Terms: Western Union, MoneyGram, T/T



Product Specification

- Type: Sheet, Pipe, Bar, Coil, Strip
- Material: 650-2000mm
- Product Name: Nickel Alloy Inconel 600 601 625 718 Sheet
- Certificate: ISO9001
- Technology: Cold Rolled/hot Rolled
- Length: 800-4500mm
- Surface: 2B/BA/NO.1/NO.3/NO.4/8K/HL/1D
- Density: 8.83 G/cm³
- Highlight: **K500 inconel 718 sheet,**
Monel 400 inconel 718 sheet, inconel 718 plate

Product Description

good price nickel alloy monel 400 K500 inconel 600 601 625 718 sheet / nickel 200 201 alloy plate for sale

Product Name	good price nickel alloy inconel 600 601 625 718 sheet / nickel alloy plate for sale
Material	Monel/Inconel/Hastelloy/Duplex Steel/PH Steel/Nickel Alloy
Shape	Round, Forging, Ring, Coil, Flange, Disc, Foil, Spherical, Ribbon, Square, Bar, Pipe, Sheet
Grade	Duplex: 2205(UNS S31803/S32205), 2507(UNS S32750), UNS S32760(Zeron 100), 2304, 904L
	Others: 253Ma, 254SMo, 654SMo, F50(UNSS32100)F60, F61, F65, 1J22, N4, N6 etc
	Alloy : Alloy 20/28/31
	Hastelloy: Hastelloy B / -2/B-3/C22/C-4/S/ C276/C-2000/G-35/G-30/X/N/g
	Hastelloy B / UNS N10001, Hastelloy B-2 / UNS N10665 / DIN W. Nr. 2.4617, Hastelloy C,
	Hastelloy C-4 / UNS N06455 / DIN W. Nr. 2.4610, Hastelloy C-22 / UNS N06022 / DIN W. Nr. 2.4602,
	Hastelloy C-276 / UNS N10276 / DIN W. Nr. 2.4819, Hastelloy X / UNS N06002 / DIN W. Nr. 2.4665
	Haynes: Haynes 230/556/188
	Inconel 600/601/602CA/617/625/713/718/738/X-750, Carpenter 20
	Inconel 718 / UNS N07718 / DIN W. Nr. 2.4668, Inconel 601 / UNS N06601 / DIN W. Nr. 2.4851,
	Inconel 625 / UNS N06625 / DIN W. Nr. 2.4856, Inconel 725 / UNS N07725, Inconel X-750 / UNS N07750 / DIN W. Nr. 2.4669, Inconel 600 / UNS N06600 / DIN W. Nr. 2.4816
	Incoloy: Incoloy 800/800H/800HT/825/925/926;
Specification	GH: GH2132, GH3030, GH3039, GH3128, GH4180, GH3044
	Monel: Monel 400/K500/R405
	Nitronic: Nitronic 40/50/60;
	Nimonic: Nimonic 75/80A/90/A263 ;
	Wire: 0.01-10mm Strip: 0.05*5.0-5.0*250mm Bar: φ4-50mm; Length 2000-5000mm Pipe: φ6-273mm; δ1-30mm; Length 1000-8000mm Sheet: δ 0.8-36mm; Width 650-2000mm; Length 800-4500mm
Product Characteristics	1. According to the preparation process can be divided into deformation superalloys, casting superalloys and powder metallurgy superalloys. 2. According to the strengthening mode, there are solid solution strengthening type, precipitation strengthening type, oxide dispersion strengthening type and fiber strengthening type, etc..
Standard	GB, AISI, ASTM, DIN, EN, SUS, UNS etc
Inspection	ISO, SGS, BV and so on.
Application	High temperature components such as turbine blades, guide vanes, turbine disks, high pressure compressor disks, machine manufacturing and combustion chambers used in the manufacture of aviation, naval and industrial gas turbines
Packaging	1. cases packed in wooden cases 2. paper packaging 3. plastic packaging 4. foam packaging Packaging according to customer requirements or products
Delivery	7-25days or According to the product
Payment	L/C, D/A, D/P, T/T, Western Union, MoneyGram, According to customer requirements payments for offline orders.

Chemical Composition

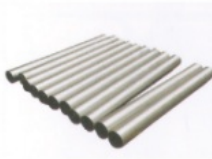
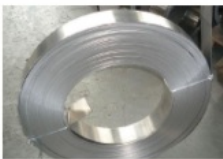
Grade	Ni%	Cu%	Fe%	Mn%	C%	Si%	S%
Monel 400	Min 63	28-34	Max 2.5	Max 2.0	Max 0.30	Max 0.50	Max 0.024
Monel 400 International Brand							
	USA	GE				UK	FR
	UNS	SEW VDIUV				BS	AFNOR
Monel 400	N04400	W.Nr.2.4360 NiCu30Fe				NA 12	Nu 30

Physical Properties

Grade	Density	Melting Point
Monel 400	8.83 g/cm3	1300 -1390

Mechanical Properties					
Alloy	Tensile Strength (Rm N/mm2)	Yield strength (RP0.2N/mm2)	Elongation(A5%)	HB	
Monel 400	480	170	35	≥331	
Production Standard					
	Bar	Forging	Pipe	Sheet/Strip	Welding Wire
Standard	ASTM B164	ASTM B564	ASTM B165	ASTM B127	ERNiCu-7

➔ Monel K-500(UNS N05500)

Monel K-500(UNS N05500)											
化学成分 Chemical Composition	合金	%	镍Ni	铜Cu	铁Fe	铝AL	碳C	钛Ti	锰Mn	硅Si	硫P
	500	最小min	63	27		2.30	-	0.35	-	-	-
		最大max	-	33	2.0	3.15	0.08	0.85	1.5	0.5	0.01
物理特性 Physical Characteristics	密度 Density		8.05g/cm³								
	熔点 Melting point		1288-1343°C								
在常温下合金 的机械性能的 最小值	典型机械性能		抗拉强度 Rm N/mm²		屈服强度 RP0.2 N/mm²		延伸率 A5%		测试温度 Test °C		
	固溶处理		1100		790		20		常温		
特性 characteristic	MONEL K500又叫UNS N05500,具有与Alloy 400相同的耐蚀性能,但是具有更高的机械强度和硬度。具有较好的耐热腐蚀性能和长期组织稳定性。										
金相结构 Metallographic structure	Monel500合金的组织为高强度的单相固溶体										
耐腐蚀性 Corrosion resistance	Monel k-500合金在氟气、盐酸、硫酸、氢氟酸以及它们的派生物中有极优秀的耐蚀性。同时在海水中比铜基合金更具耐蚀性。Monel500在浓度小于85%的硫酸中都是耐蚀的。Monel k-500是可耐氢氟酸中为数极少的重要材料之一。水腐蚀: Monel500合金在多数水腐蚀情况下,不仅耐蚀性极佳,而且孔蚀、应力腐蚀等也很少发现,腐蚀速度小于0.025mm/a。高温腐蚀: Monel500在空气中连续工作的最高温度一般在600°C左右,在高温蒸汽中,腐蚀速度小于0.026mm/a,由于Monel500合金镍含量高,故能耐585°C以下无水氨和氯化条件下的腐蚀。										
应用范围 应用领域 Application	主要用于制造航空发动机上的工作温度在750°C以下的涡轮叶片及燃气轮机叶片,用于制造船舶上的紧固件、弹簧,化工设备上的泵、阀门零部件,造纸设备上的刮浆刀片等。										
<div></div>											

Qingsen, one of the industry 's leading supplier of Truck Body Parts,Trailer Accessories and Commercial vehicle components since 2018.Our products cover more than 800 kinds which include Door Lock System,Hinges, Fasteners, Cargo Control, Door Seal, Door Retainer,Buckle, Roller,E-track, Winch,Buffer, Folding Step,Deck Ring etc. And can completelyserve for trucks,trailers, containers etc.we excel in providing our customers with the best in value by deliveringthe products you need.Our team strives for "extraordinary" in providingthe truck body parts and trailer parts industry with the best in productsand service which is unparalleled in the industry.when you need any parts related to a truck or trailer or container of anykind.Qingsen is your world-wide ONE-STOP SHOP. With more than 500suppliers and factories nationwide, we help you get the projects donequickly and correctly.

Q1: Can I have one or two samples for checking?

A: Yes, one free samples and freight collect, trial order is aslo welcome.

Q2: What's your lead time?

A: Depending on orders, usually 10~35 days

Q3: What countries have you exported to?

A: Worldwide!

Q4: Do you have MOQ ?

A: Depending on exact product, usually 500 units, no MOQ if goods in stock, most products list on Alibaba we have hundreds to thousands in stock.

Q5: Can you meet my requirements like print LOGO on the product, specific packaging, etc

A: Of course! we are a profesional factory, everything can go in you way!

Q6: Can I visit your company?

A: sure, any time at your convinience, please inform us before your visit

Q7: How is my product shipped? Will my product arrive on time?

A: By sea, by air or by express carriers (UPS, FedEx, TNT) transit time depends on freight rates.

Q8: What's terms of payment?

A: 30% T/T deposit, 70% balance before delivery.

B: 30% T/T deposit, 70% balance against BL.

C: 100% in advance, L/C at sight, Western Union/ Paypal for small amount payment.



Suzhou Industrial PARK Qingsen Trading Co., Ltd.



+8613815258017



sales@qingsensz.com.cn



specialalloysteels.com

Room 916, Xinghai International Building, No.28, Wansheng Street, Suzhou Industrial Park