

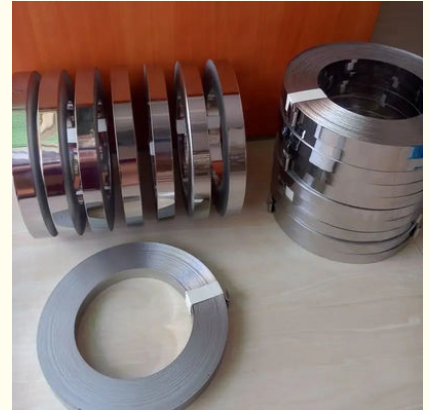


Industrial Cr20Ni35 Nickel Alloy Steel 4K 8K Polish

Our Product Introduction

Basic Information

- Place of Origin: China
- Brand Name: Qingsen
- Model Number: GH3044
- Minimum Order Quantity: 1-2 ton
- Price: negotiable
- Packaging Details: carton box
- Delivery Time: 15-20 days
- Payment Terms: Western Union, MoneyGram, T/T



Product Specification

- Technique: Hot-rolled, Hot-forged, Cold-drawn, Centerless Grinding
- Type: Strip
- Length: 1-12m
- Material: Hastelloy C276 C22 B2
- Surface: 2B, BA, 4K, 8K, No.1, No.4, HL, brush, polish, bright
- Width: 6mm - 600mm
- Application: Construction/Industrial/Decoration/Chemical
- Thickness: 0.05-3mm
- Highlight: **Cr20Ni35 Nickel Alloy Steel, Industrial Nickel Alloy Steel, Polish nickel and steel alloy**



Product Description

Cr20Ni35 nickel chrome steel alloy metal strips

High temperature alloy has the high temperature hot corrosion and high temperature abrasion resistance, the metal material can work long-term which above 600 with under certain stress conditions.

Material	Monel/Inconel/Hastelloy/Duplex Steel/PH Steel/Nickel Alloy
Shape	Round, Forging, Ring, Coil, Flange, Disc, Foil, Spherical, Ribbon, Square, Bar, Pipe, Sheet
Grade	Duplex: 2205(UNS S31803/S32205), 2507(UNS S32750), UNS S32760(Zeron 100), 2304, 904L
	Others: 253Ma, 254SMo, 654SMo, F50(UNSS32100)F60, F61, F65, 1J22, N4, N6 etc
	Alloy : Alloy 20/28/31
	Hastelloy: Hastelloy B / -2/B-3/C22/C-4/S/ C276/C-2000/G-35/G-30/X/N/g
	Hastelloy B / UNS N10001, Hastelloy B-2 / UNS N10665 / DIN W. Nr. 2.4617, Hastelloy C,
	Hastelloy C-4 / UNS N06455 / DIN W. Nr. 2.4610, Hastelloy C-22 / UNS N06022 / DIN W. Nr. 2.4602,
	Hastelloy C-276 / UNS N10276 / DIN W. Nr. 2.4819, Hastelloy X / UNS N06002 / DIN W. Nr. 2.4665
	Haynes: Haynes 230/556/188
	Inconel 600/601/602CA/617/625/713/718/738/X-750, Carpenter 20
	Inconel 718 / UNS N07718 / DIN W. Nr. 2.4668, Inconel 601 / UNS N06601 / DIN W. Nr. 2.4851,
	Inconel 625 / UNS N06625 / DIN W. Nr. 2.4856, Inconel 725 / UNS N07725, Inconel X-750 / UNS N07750 / DIN W. Nr. 2.4669, Inconel 600 / UNS N06600 / DIN W. Nr. 2.4816
	Incoloy: Incoloy 800/800H/800HT/825/925/926;
Specific ation	GH: GH2132, GH3030, GH3039, GH3128, GH4180, GH3044
	Monel: Monel 400/K500/R405
	Nitronic: Nitronic 40/50/60;
	Nimonic: Nimonic 75/80A/90/A263 ;
Product Charact eristics	Wire: 0.01-10mm
	Strip: 0.05*5.0-5.0*250mm
Standar d	Bar: ϕ 4-50mm; Length 2000-5000mm
	Pipe: ϕ 6-273mm; δ 1-30mm; Length 1000-8000mm
Inspecti on	Sheet: δ 0.8-36mm; Width 650-2000mm; Length 800-4500mm
	1. According to the preparation process can be divided into deformation superalloys, casting superalloys and powder metallurgy superalloys.
Applicati on	2. According to the strengthening mode, there are solid solution strengthening type, precipitation strengthening type, oxide dispersion strengthening type and fiber strengthening type, etc..
	GB, AISI, ASTM, DIN, EN, SUS, UNS etc
Packagi ng	ISO, SGS, BV and so on.
	High temperature components such as turbine blades, guide vanes, turbine disks, high pressure compressor disks, machine manufacturing and combustion chambers used in the manufacture of aviation, naval and industrial gas turbines
Delivery	1. cases packed in wooden cases
	2. paper packaging
Paymen t	3. plastic packing
	4. foam packaging
	Packaging according to customer requirements or products
	7-25days or According to the product
	L/C, D/A, D/P, T/T, Western Union, MoneyGram, According to customer requirements
	payments for offline orders.

GH3044														
简介 Brief introduction	GH3044是固溶强化镍基抗氧化合金,在900℃以下具有高的塑性和中等的热强性并具有优良的抗氧化性和良好的冲压、焊接工艺性能,适宜制造在900℃以下长期工作的航空发动机主燃烧室和加力燃烧室零部件以及隔热屏、导向叶片等。													
化学成分 Chemical Composition	%	Ni	Cr	Fe	Mo	C	Cu	AL	Mn	S	Si	Ti	P	W
	最小	余量	23.5					0.5				0.3		13.0
	最大	余量	26.5	4.0	1.5	0.1	0.07		0.5	0.013	0.8	0.7	0.013	16.0
物理特性 Physical Characteristics	密度 Density	8.89g/cm³												
	熔点 Melting point	1352-1375℃												
应用范围 应用领域 Application	航空发动机燃烧室火焰筒、加力燃烧室壳体、调节片 燃气轮机燃烧室的结构件 涡轮发动机燃烧室零部件 加力燃烧室零部件													



Qingsen, one of the industry 's leading supplier of Truck Body Parts,Trailer Accessories and Commercial vehicle components since 2018.Our products cover more than 800 kinds which include Door Lock System,Hinges, Fasteners, Cargo Control, Door Seal, Door Retainer,Buckle, Roller,E-track, Winch,Buffer, Folding Step,Deck Ring etc. And can completelyserve for trucks,trailers, containers etc.we excel in providing our customers with the best in value by deliveringthe products you need.Our team strives for "extraordinary" in providingthe truck body parts and trailer parts industry with the best in productsand service which is unparalleled in the industry.when you need any parts related to a truck or trailer or container of anykind.Qingsen is your world-wide ONE-STOP SHOP. With more than 500suppliers and factories nationwide, we help you get the projects donequickly and correctly.

Q1: Can I have one or two samples for checking?

A: Yes, one free samples and freight collect, trial order is aslo welcome.

Q2: What's your lead time?

A: Depending on orders, usually 10~35 days

Q3: What countries have you exported to?

A: Worldwide!

Q4: Do you have MOQ ?

A: Depending on exact product, usually 500 units, no MOQ if goods in stock, most products list on Alibaba we have hundreds to thousands in stock.

Q5: Can you meet my requirements like print LOGO on the product, specific packaging, etc

A: Of course! we are a profesional factory, everything can go in you way!

Q6: Can I visit your company?

A: sure, any time at your convinience, please inform us before your visit

Q7: How is my product shipped? Will my product arrive on time?

A: By sea, by air or by express carriers (UPS, FedEx, TNT) transit time depends on freight rates.

Q8: What's terms of payment?

A: 30% T/T deposit, 70% balance before delivery.

B: 30% T/T deposit, 70% balance against BL.

C: 100% in advance, L/C at sight, Western Union/ Paypal for small amount payment.



Suzhou Industrial PARK Qingsen Trading Co., Ltd.



+8613815258017



sales@qingsensz.com.cn



specialalloysteels.com

Room 916, Xinghai International Building, No.28, Wansheng Street, Suzhou Industrial Park