

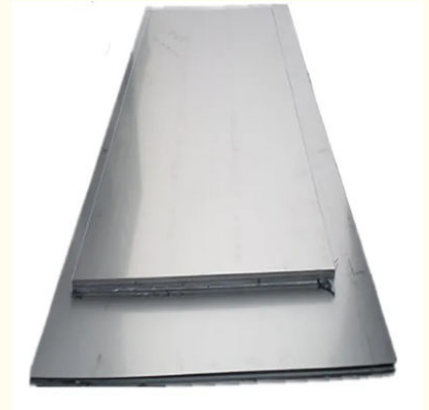


ASTM Inconel 625 Material Nickel Alloy BA 2B Inconel 625 Plate Cold Rolled

Our Product Introduction

Basic Information

- Place of Origin: China
- Brand Name: Qingsen
- Model Number: Inconel 625
- Minimum Order Quantity: 1-2 ton
- Price: negotiable
- Packaging Details: carton box
- Delivery Time: 15-20 days
- Payment Terms: Western Union, MoneyGram, T/T



Product Specification

- Width: 500-2250mm
- Standard: ASTM B168
- Technology: Cold Rolled Hot Rolled
- Powder Or Not: Not Powder
- Surface: BA/2B/NO.1/NO.3/NO.4/8K/HL/2D/1D
- Certificate: ISO9001
- Color: Silver
- Thickness: 0.15mm-300mm
- Highlight: **ASTM Inconel 625 Material,
Inconel 625 Material BA, 2B inconel 625 plate**

Product Description

ASTM standard of building nickel alloy inconel 625 Sheets Cold Rolled

Inconel 601(UNS N06600) is a standard engineering material and has a great resistance to heat and corrosion. Due to high chromium and some aluminum content, Inconel 601 has good resistance in oxidizing sulfur bearing atmospheres at elevated temperatures.

Product Name	Carbon steel plate
Length	1000mm-12000mm or according to customer's special request
Width	500-2250mm
Thickness	0.15mm-300mm
Standard	AISI,ASTM,DIN,JIS,GB,JIS,SUS,EN,etc
Technique	Hot rolled / cold rolled
Thickness Tolerance	Thickness: +/-0.02mm, Width:+/-2mm
Steel Grade	GB: Q195, Q215, Q235A, Q235B, Q235C, Q235D, Q255A, 255B, Q275, Q295A, Q295B, Q345B, Q345C, Q345D, Q345E, Q390A, Q390B, Q390C, Q390D, Q390E, Q420A, Q420B, Q420C, Q420D, Q420E, Q460D, Q460E, Q500D, Q500E, Q550D, Q550E, Q620D, Q620E, Q690D, Q690E EN: S185, S235JR, S275JR, S355JR, S420NL, S460NL S500Q, S550Q, S620Q, S690Q ASTM: Grade B, Grade C, Grade D, Grade 36, Grade 40, Grade 42, Grade 50, Grade 55, Grade 60, Grade 65, Grade 80 JIS: SS330, SPHC, SS400, SPFC, SPHD, SPHE
Application	1. Automobile, Bridges, Buildings. 2. Machinery, Pressure vessel industries. 3. Ship building, Engineering construction. 4. Mechanical manufacturing, Pavement slab, ect.
MOQ	1 ton , We can accept sample order.
Shipment Time	Within 7-15 workdays after receiving deposit
Mill MTC	Can be supplied before shipment
Export Packing	Waterproof paper, and steel strip packed. Standard Export Seaworthy Package.Suit for all kinds of transport,or as required
Capacity	25000 tons/month

Inconel 625(NS 336/UNSNO6625)

Inconel 625(NS 336 UNSN06625)														
化学成分 Chemical Composition	%	Ni	Cr	Fe	Mo	Nb	C	Mn	Si	S	P	AL	Ti	B
	最小min	余量	20		8.0	3.15								
	最大max	余量	23	5	10	4.15	0.1	0.5	0.5	0.015	0.015	0.4	0.4	0.006
物理特性 Physical Characteristics	密度 Density		8.4g/cm³											
	熔点 Melting point		1290-1350°C											
在常温下合金 的机械性能的 最小值	典型机械性能		抗拉强度 Rm N/mm²		屈服强度 RP0.2 N/mm²		延伸率 A5%		布氏硬度 HB					
	固溶处理		830		414		30		≤290					
特性 characteristic	1.对氧化和还原环境的各种腐蚀介质都具有非常出色的抗腐蚀能力[1] 2.优秀的抗点腐蚀和缝隙腐蚀的能力，并且不会产生由于氯化物引起的应力腐蚀开裂 3.优秀的耐无机酸腐蚀能力，如硝酸、磷酸、硫酸、盐酸以及硫酸和盐酸的混合酸等 4.优秀的耐各种无机酸混合溶液腐蚀的能力 5.温度达40℃时，在各种浓度的盐酸溶液中均能表现出很好的耐蚀性能 6.良好的加工性和焊接性，无焊后开裂敏感性 7.具有壁温在-196~450℃的压力容器的制造认证 8.经美国腐蚀工程师协会NACE标准认证(MR-01-75)符合酸性气体环境使用的最高标准等级VII													
金相结构 Metallographic structure	625为面心立方晶格结构。当在约650℃保温足够长时间后，将析出碳颗粒和不稳定的四元相并将转化为稳定的Ni3(Nb, Ti)斜方晶格相。固溶强化后镍铬矩阵中的钼、铌成分将提高材料的机械性能，但塑性会有所降低。													
应用范围 应用领域 Application	1.含氯化物的有机化学流程工艺的部件，尤其是在使用酸性氯化物催化剂的场合 2.用于制造纸浆和造纸工业的蒸发器和漂白池 3.烟气脱硫系统中的吸收塔、再热器、烟气进口挡板、风扇(潮湿)、搅拌器、导流板以及烟道等 4.用于制造应用于酸性气体环境的设备和部件 5.乙酸和乙醇反应发生器 6.硫酸冷凝器													
														

Qingsen, one of the industry 's leading supplier of Truck Body Parts,Trailer Accessories and Commercial vehicle components since 2018.Our products cover more than 800 kinds which include Door Lock System.Hinges, Fasteners, Cargo Control, Door Seal, Door Retainer,Buckle, Roller,E-track, Winch,Buffer, Folding Step,Deck Ring etc. And can completelyserve for trucks,trailers, containers etc.we excel in providing our customers with the best in value by deliveringthe products you need.Our team strives for "extraordinary" in providingthe truck body parts and trailer parts industry with the best in productsand service which is unparalleled in the industry.when you need any parts related to a truck or trailer or container of anykind.Qingsen is your world-wide ONE-STOP SHOP. With more than 500suppliers and factories nationwide, we help you get the projects donequickly and correctly.

Q1: Can I have one or two samples for checking?

A: Yes, one free samples and freight collect, trial order is aslo welcome.

Q2: What's your lead time?

A: Depending on orders, usually 10~35 days

Q3: What countries have you exported to?

A: Worldwide!

Q4: Do you have MOQ ?

A: Depending on exact product, usually 500 units, no MOQ if goods in stock, most products list on Alibaba we have hundreds to thousands in stock.

Q5: Can you meet my requirements like print LOGO on the product, specific packaging, etc

A: Of course! we are a profesional factory, everything can go in you way!

Q6: Can I visit your company?

A: sure, any time at your convinience, please inform us before your visit

Q7: How is my product shipped? Will my product arrive on time?

A: By sea, by air or by express carriers (UPS, FedEx, TNT) transit time depends on freight rates.

Q8: What's terms of payment?

A: 30% T/T deposit, 70% balance before delivery.

B: 30% T/T deposit, 70% balance against BL.

C: 100% in advance, L/C at sight, Western Union/ Paypal for small amount payment.



Suzhou Industrial PARK Qingsen Trading Co., Ltd.



+8613815258017



sales@qingsensz.com.cn



specialalloysteels.com

Room 916, Xinghai International Building, No.28, Wansheng Street, Suzhou Industrial Park